



SIMATIC PCS7



## ▶ THE PERFECT SOLUTION

For 30 years **fiwa group** has been offering engineering for complete automation solutions from one source. We support and facilitate you from the initial phase of a project to its implementation and supporting services. SIMATIC PCS7 is the process control system within the Totally Integrated Automation (TIA) from Siemens.

**SIMATIC PCS7 offers solutions for continuous and standardised automation.**

## ▶ YOUR BENEFITS

- ▶ Vertical integration from field level over process control system up to ERP level (via Simatic IT)
- ▶ Efficient engineering with PLSDOC: Saving engineering costs through automated generation of PCS7 software from fiwa's own requirement specification tool PLSDOC
- ▶ Migration solutions from third-party process control systems and third-party planning systems
- ▶ Cost saving through simulation: Saving commissioning costs and time through inhouse simulation of complete process control system before delivery



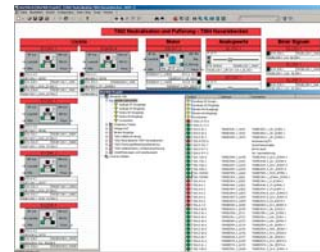
## ▶ EFFICIENT ENGINEERING WITH PLSDOC

- ▶ PLSDOC offers a requirement specification integrated in SIMATIC PCS7
- ▶ Cost reduction through automatic generation of SIMATIC PCS7 software
- ▶ Plant support: automatic documentation of SIMATIC PCS7 software by reading back from the process control system. That means lower maintenance costs for the customer
- ▶ Migration solutions from third-party systems



## ▶ COST SAVING THROUGH SIMULATION

- ▶ Simulation of complete process periphery - reduces equipment downtime
- ▶ 100% simulation for FAT -> cost reduction through pre-tested programmes
- ▶ Simulation of many Profibus DP devices possible, e.g. frequency converter etc.
- ▶ Operator training before start of production (on the original software solution)
- ▶ Pre-test of complete process functions



▶ **fiwa group** is your best partner for solutions

Our long experience in business know-how as well as our high-level quality standard will convince you! We offer you total solutions from just one hand.  
Trust in a strong partner accompanying you on a long-term basis.

- ▶ **Highly qualified employees**
- ▶ **Global player**
- ▶ **Certified Partner**
- ▶ **365 days / 24 hrs stand-by**
- ▶ **Trainings**

**An excerpt from our list of references:**

Wacker GmbH  
Forschungsreaktor FRM II in Garching  
Nestlé AG  
Linde AG



**fiwa group**  
Engineering Offices  
Piracher Straße 76–78  
D-84489 Burghausen/Germany

Phone +49(0)8677/884-0 | Fax +49(0)8677/884-333  
email [office@fi-wa.com](mailto:office@fi-wa.com) | [www.fi-wa.com](http://www.fi-wa.com)